

CITB NI giving you value for your Levy



Whilst costs are rising in other sectors of the economy CITB NI is retaining the NI levy rate for the 2023/2024 training year at 0.55% of the employers' wages bill. This lower levy rate has been maintained for the last three years because more employers are contributing to the levy pool and therefore the costs and benefits can be spread more fairly across the industry.

The CITB NI levy means that all employers in the industry make the appropriate financial contributions based on their wage bills for work in Northern Ireland. CITB NI is committed to providing employers with the best value for the levy they pay and to provide employers with both financial and practical support to meet their training and skills needs.

CITB NI will continue to work on the industry's behalf to monitor, maintain and improve industry qualifications and standards, including apprenticeships, to ensure a competent, qualified and safe workforce.

Over 60% of construction employers have highlighted via our research* they still believe in the levy and grant system and its importance to their own firm and the NI construction industry and over 90% believed it would have negative implications if it did not exist.

As the needs of the Construction industry change, so must the way in which CITB NI supports the development of skills within it. We have a new Chair and board in place, alongside the existing operational team. This culmination of individual and collective insight enables us to review how best to support the needs of the industry going forward. This is to ensure the Levy works most effectively, supporting all construction employers, addressing their skills and training needs and making those necessary changes to meet new challenges.

*Employer Tracking Survey 2022



2023/24 CITB NI products and services offered to registered employers



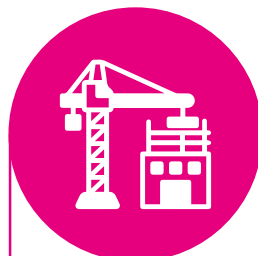
£2 million
Training Grants
Budget



Health & Safety training
Courses via MTU with
CPD accreditation



Scaffolding training
Bespoke training
courses at our unique
training facility



**TIP
(Training in
partnership)**
Specialist courses
working with key
industry bodies



**Simulated
construction
training site**
Free of charge
site for training &
development

Some of the key topics:



**Business
improvement
events**



Digital
Marketing &
Social Media



Construction
Law &
Tendering



CSR Scheme
Changes



Google Ads



Environmental
& Energy
Management



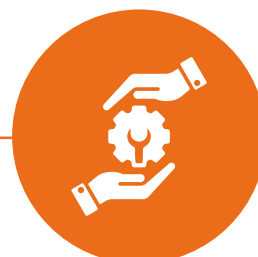
R&D
Latest industry research &
Statistics specific to the NI
construction industry



**Traditional skills
and heritage**
Various training information
and events available



**Adopt a school
programme**
Facilitates direct engagement
with employers and local
post primary schools



Help & support
Guidance for all of
employers training needs



**Careers
Initiatives**

Construction careers bootcamps

Construction based job sampling for students

Build your Career

"Consider a career in construction" Events for
Year 10 students

NI Apprenticeship week

Opportunities for engagement with potential
apprentices

Contact CITB NI

CITB NI

Nutts Corner Training Centre
17 Dundrod Road
Crumlin BT29 4SR

Web: www.citbni.org.uk

Tel: 028 9082 5466

Email: info@citbni.org.uk

If you wish to join CITB NI's mailing list please contact
alison.mcclean@citbni.org.uk with your contact details.